

PART OF N. 1/2 OF SECTION 22, T.6 N.,R.1 W., S.L.B. & M.
ROLLING HILLS ADDITION NO. 6

LOTS 6-17

IN OGDEN CITY

SCALE: 1" = 50'

TAXING UNIT: 25

SEE PAGE 56-1

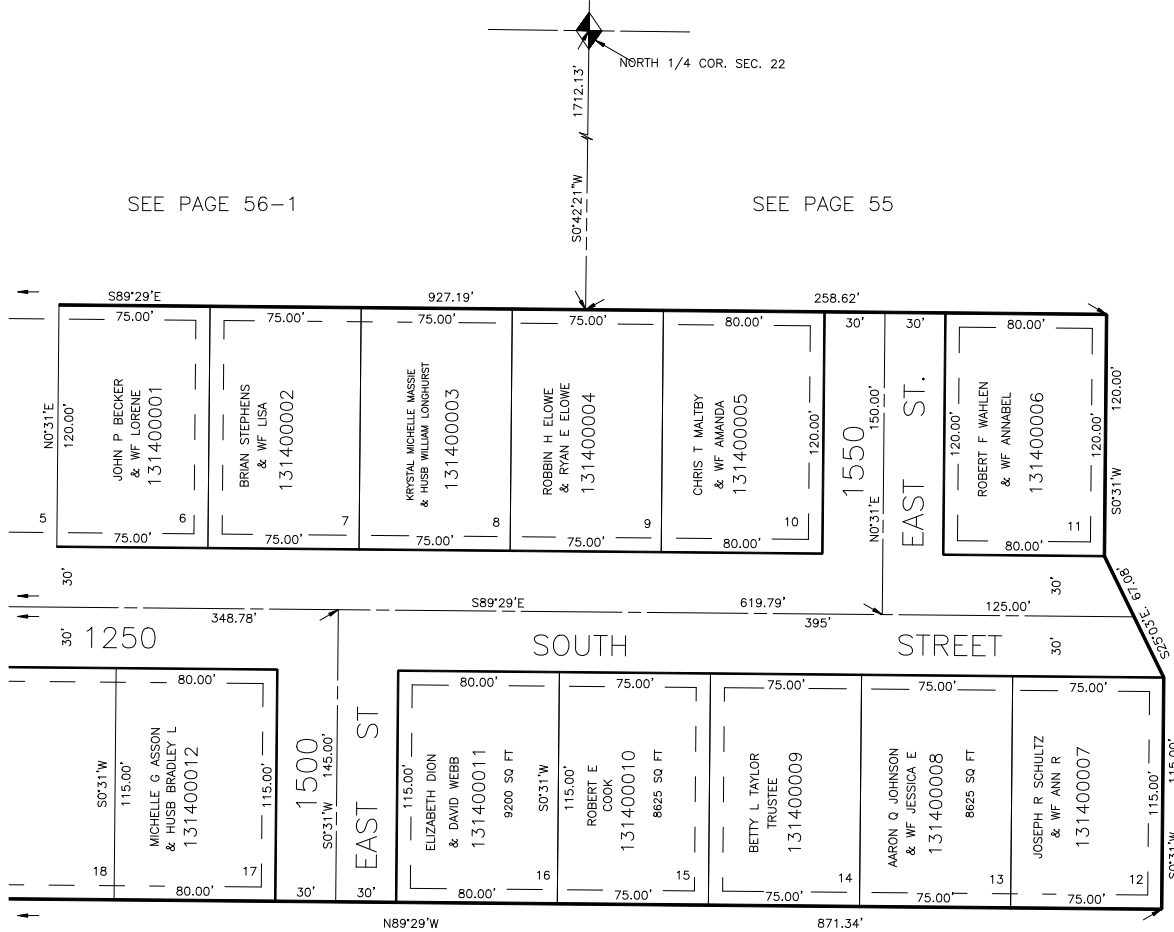
SEE PAGE 55

SEE PAGE 139

SEE PAGE 45

SEE PAGE 56-1

SEE PAGE 45



7' UTILITY & DRAINAGE EASEMENTS EACH SIDE OF PROPERTY LINES AS INDICATED BY DASHED LINES EXCEPT AS OTHERWISE SHOWN.

FOR COMPLETE ENG DATA SEE ORIGINAL DEDICATION PLAT IN BOOK 17, PAGE 57 OF RECORDS.